

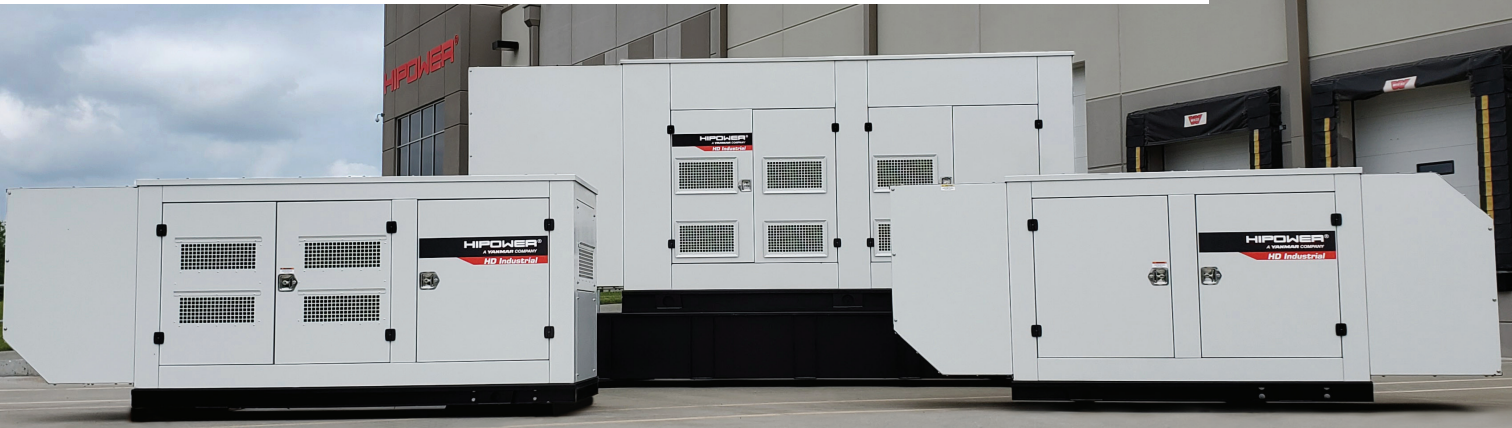


## ***HEAVY DUTY INDUSTRIAL DIESEL STANDBY SERIES***

Designed and engineered to ensure the highest level of performance and quality standards.

**HIPOWER**®  
A **YANMAR** COMPANY

# Heavy Duty Industrial Diesel Standby Product Line



Introducing HIPOWER's newly redesigned and reengineered HEAVY DUTY INDUSTRIAL (HDI) Diesel Standby product line, specifically tailored to meet the needs of the stationary market in North America. Our product line offers reliable power solutions for various commercial, industrial, and life-critical applications, ranging from 60 kW to 2000 kW. The HDI series comes equipped with a rich range of innovative standard features, and industry-leading configurable and engineered options. Our HDI series meets tough industry testing and quality standards, including UL 2200, ISO, and CSA certifications for models up to 2000 kW, ensuring that the HDI series can meet even the most demanding requirements.

## STANDARD FEATURES

### ENCLOSURE

- ◆ Rust-Proof Fastener with rubber washers to protect finish
- ◆ High Performance Sound-Absorbing Material
- ◆ Gasketed Doors
- ◆ Air Discharge Hoods for Radiators-Upward/Downward Pointing
- ◆ Lift Off Door Hinges
- ◆ Stainless Steel Lockable Handles
- ◆ Textured Polyester Powder Coat + Primer

### ENGINE SYSTEM

- ◆ Oil Drain Extension w/valve
- ◆ Air Cleaner
- ◆ Fan Guard
- ◆ Factory Filled Oil
- ◆ Battery Charging Alternator

## CONFIGURABLE OPTIONS

### ENCLOSURE

- ◆ Open Skid
- ◆ Level 1 Sound Attenuation
- ◆ Level 2 Sound Attenuation
- ◆ Level 1 Sound Attenuation (Aluminum Enclosure)
- ◆ Level 2 Sound Attenuation (Aluminum Enclosure)
- ◆ Snow Hood (Only with L2)

### ENGINE SYSTEM

- ◆ Oil Heater
- ◆ 120V-1ph Water Jacket Heater (with Isolation Valves)

### FUEL TANK

- ◆ ULC142 Fuel Tank 12 hrs. (HDI 800-2000 only)
- ◆ ULC142 Fuel Tank 24 hrs.
- ◆ ULC142 Fuel Tank 48 hrs.

### ALTERNATOR SYSTEM

- ◆ Anti-condensation Heater
- ◆ Rheostat
- ◆ PMG with MX341 AVR or MX321 AVR

## ENGINEERED OPTIONS

### ENCLOSURE

- ◆ Air Outlet Gravity Dampers
- ◆ Air Inlet Motorized Dampers (Only with L2)

### ENGINE SYSTEM

- ◆ Fluid Containment Pan
- ◆ 208V-3ph Water Jacket Heater (With Isolation Valves)

### CIRCUIT BREAKER OPTIONS

- ◆ 3rd Breaker System

### ELECTRICAL SYSTEMS

- ◆ Battery
- ◆ Battery Cables
- ◆ Battery Tray
- ◆ DSE 7410 Controller

### ALTERNATOR SYSTEM

- ◆ 6 leads (HDI-1250 to 2000)
- ◆ 12 leads (Up to HDI-1000)
- ◆ Class H Insulation Material
- ◆ Vented Rotor 2/3 Pitch
- ◆ Full Load Capacity Alternator
- ◆ Protective Thermal Switch
- ◆ Permanent Magnet Excitation (On HDI250 + Higher Models)
- ◆ Skewed Stator

### ELECTRICAL SYSTEM

- ◆ Battery Warmer
- ◆ Battery Charger
- ◆ 10 Positions Load Center (100 Amps)
- ◆ Remote ESTOP with N3R Break Glass
- ◆ 120V GFCI Receptacle
- ◆ 10A Relay Common Alarm
- ◆ 10A Run Relay
- ◆ Control Panel Heater
- ◆ 8, 16 & 24 Leds Remote Annunciator on Surface Mounted Box
- ◆ DSE8610 Parallel Controller + Motorized Bkrs. (On HDI400 + Higher Models)
- ◆ AC/DC Enclosure Lighting Kit w/Timer
- ◆ Enclosure Heater

### GENERATOR SET

- ◆ Extended Test
- ◆ Extended Warranty
- ◆ Custom Testing

- ◆ Shunt Trip on 3rd Breaker
- ◆ Auxiliary Contact on 3rd Breaker

### FUEL TANK

- ◆ ULC142 Fuel Tank 72 hrs.\*
- ◆ ULC142 Fuel Tank 96 hrs.\*
- ◆ Multiple Fuel Tank Accessories

### ELECTRICAL SYSTEMS

- ◆ 240V Twist Lock Receptacle

### FUEL SYSTEM

- ◆ Primary Fuel Filter

### COOLING SYSTEM

- ◆ Factory-Installed Radiator
- ◆ Radiator Drain Extension w/valve
- ◆ 50/50 Ethylene Glycol Antifreeze

### GENERATOR SET

- ◆ Internal Genset Vibration Isolation
- ◆ Separation of Circuits - High/Low Voltage
- ◆ Wrapped Exhaust Piping
- ◆ Standard Factory Testing
- ◆ 2 Yrs./2,000 Hrs. (Whichever occurs first) parts & labor.
- ◆ Silencer Mounted in the Discharged Hood (Enclosed Models Only)

### CONTROL SYSTEM

- ◆ Spare Inputs (x4) / output (x4)
- ◆ DSE2130 - DSENet Input Expansion Module
- ◆ DSE2157 - DSENet Output Expansion Module
- ◆ DSE2520 - Remote Display Module

### CIRCUIT BREAKER OPTIONS

- ◆ LSI Electronic Trip 80% and 100% Rated
- ◆ LSI Electronic Trip 80% and 100% Rated
- ◆ Second Main Line Circuit Breaker
- ◆ Shunt Trip
- ◆ Auxiliary Contacts for MLCB
- ◆ Auxiliary Contacts for Secondary Breaker
- ◆ Mechanical Lugs

### CERTIFICATIONS

- ◆ IBC Certification

### ALTERNATOR SYSTEM

- ◆ Bearing RTD's on Alternator
- ◆ Main Stator RTD's on Alternator (2 per Phase)
- ◆ Tropical Coating
- ◆ Alternator Up-sizing

\*For HDI 800-2000, review with sales for feasibility.

	HDI 60	HDI 80	HDI 100	HDI 130	HDI 160	HDI 180	HDI 200	HDI 230	HDI 250	HDI 300	HDI 350
--	--------	--------	---------	---------	---------	---------	---------	---------	---------	---------	---------

**Performance**

**Units**

Rated standby power 1ø	kW	60	80	100	130	160	N/A	N/A	N/A	N/A	N/A	N/A
Rated standby power 3ø	kW	60	80	100	130	160	180	200	230	250	300	350
Rated standby power 3ø	kVA	75	100	125	162.5	200	225	250	287.5	312.5	375	437.5
Amp capacity @480V	A	90.2	124.8	150.4	194.6	248.1	278.2	300.7	345.8	388.6	449.0	525.5
Amp capacity @208V	A	209.2	298.3	347.0	450.9	569.0	645.4	694.0	798.0	901.6	1031.7	1200.5
Amp capacity @600V	A	72.2	99.8	120.3	155.6	198.5	216.5	240.6	276.7	300.7	355.4	421.3
Max. sound pressure level (LPA) @23' @100% Load (L2)	dB(A)	68.5	68.5	72	72	72	72	71	71	71	73	73
Ambient Temp Capability	°F /°C	113/45	113/45	113/45	113/45	113/45	113/45	113/45	113/45	113/45	113/45	113/45

**Fuel Consumption**

Fuel consumption at full load (STANDBY)	gal/h	4.99	6.76	7.65	9.76	12.1	13.3	15.5	16.7	18.5	21.8	25.8
---	-------	------	------	------	------	------	------	------	------	------	------	------

**Alternator**

Model (480V)		UCI224F	UCI274C	UCI274D	UCI274F	UCI274G	UCI274H	UCDI 274J	UCDI 274K	S4L1D-D	S4L1D-E	S4L1D-F
Automatic voltage regulator (+/-0.5%)		SX460	SX460	SX460	SX460	SX460	SX460	SX460	SX460	MX341	MX341	MX341
Insulation		Class H	Class H	Class H	Class H	Class H	Class H	Class H	Class H	Class H	Class H	Class H
Temperature Rise	°F /°C	125/40	125/40	125/40	125/40	125/40	125/40	125/40	125/40	125/40	125/40	125/40

**Engine**

Manufacturer		FPT	FPT	FPT	FPT	FPT	FPT	FPT	FPT	FPT	FPT	FPT
Model		N45 SM2X	N45 TM2X	N67 TM1X	N67 TM1X	N67 TE2X	N67 TE2X	C87 TE1D	C87 TE1D	C87 TE1D	C10 TE1D	C13 TE3X
EPA Certified		Tier 3	Tier 3	Tier 3	Tier 3	Tier 3	Tier 3	Tier 3	Tier 3	Tier 3	Tier 3	Tier 3
Nominal Power	HP	89.8	127.7	188.3	188.3	268.1	268.1	375.3	375.3	375.3	425.1	497.5

**Dimensions and Weight**

Dimensions   L x W x H   Level 1	inches	113.9 x 46.3 x 60.1			142.1 x 46.3 x 60.1			160 x 55.0 x 68.1			173 x 55.0 x 70.1	
Weight   Level 1	lbs.	3050	3161	4420	4520	4650	4720	6440	6440	6540	7700	7830

Specifications and designs are subject to change. Estimate weight; actual weight varies depending on options selected. Single phase available from HDI60 to HDI160. Other voltage configurations available upon request.

HIPOWER SYSTEMS is committed to delivering robust and reliable Heavy Duty Industrial Diesel Standby generators to the power generation industry throughout North America. We stand behind every machine we make. That is why all our generators come with a standard 2 years or 2,000 hours (whichever occurs first) parts and labor limited warranty.



PICTURED - HDI600/LEVEL 1 & HDI80/LEVEL 2

		HDI 400	HDI 515	HDI 600	HDI 800	HDI 1000	HDI 1250	HDI 1600	HDI 2000
<b>Performance</b>	<b>Units</b>								
Rated standby power 3ø	kW	399	515	600	800	1000	1250	1600	2000
Rated standby power 3ø	kVA	499	644	750	1000	1250	1563	2000	2500
Amp capacity @480V	A	599.9	774.3	902.1	1203	1504	1879	2406	3007
Amp capacity @208V	A	1387.9	1786.9	2081.9	2776	N/A	N/A	N/A	N/A
Amp capacity @600V	A	481.1	619.5	721.7	962	1203	1504	1925	2406
Max. sound pressure level (LPA) @23' @100% Load (L2)	dB(A)	75	76	77	75	75	78	81	83
Ambient Temp Capability	°F / °C	113/45	113/45	113/45	113/45	113/45	113/45	113/45	113/45

### Fuel Consumption

Fuel consumption at full load (STANDBY)	gal / h	27.9	35.8	42.31	65	72.5	97.2	124.5	155
---	---------	------	------	-------	----	------	------	-------	-----

### Alternator

Model (480V)		HCI534C	HCI534E	HCI534F	S6L1D-C	S6L1D-E	S6L1D-H	S7L1D-D	S7L1D-G
Automatic voltage regulator (+/-0.5%)		MX341	MX341	MX341	MX341	MX341	MX341	MX341	MX341
Insulation		Class H	Class H	Class H	Class H	Class H	Class H	Class H	Class H
Temperature Rise	°F / °C	125/40	125/40	125/40	125/40	125/40	125/40	125/40	125/40

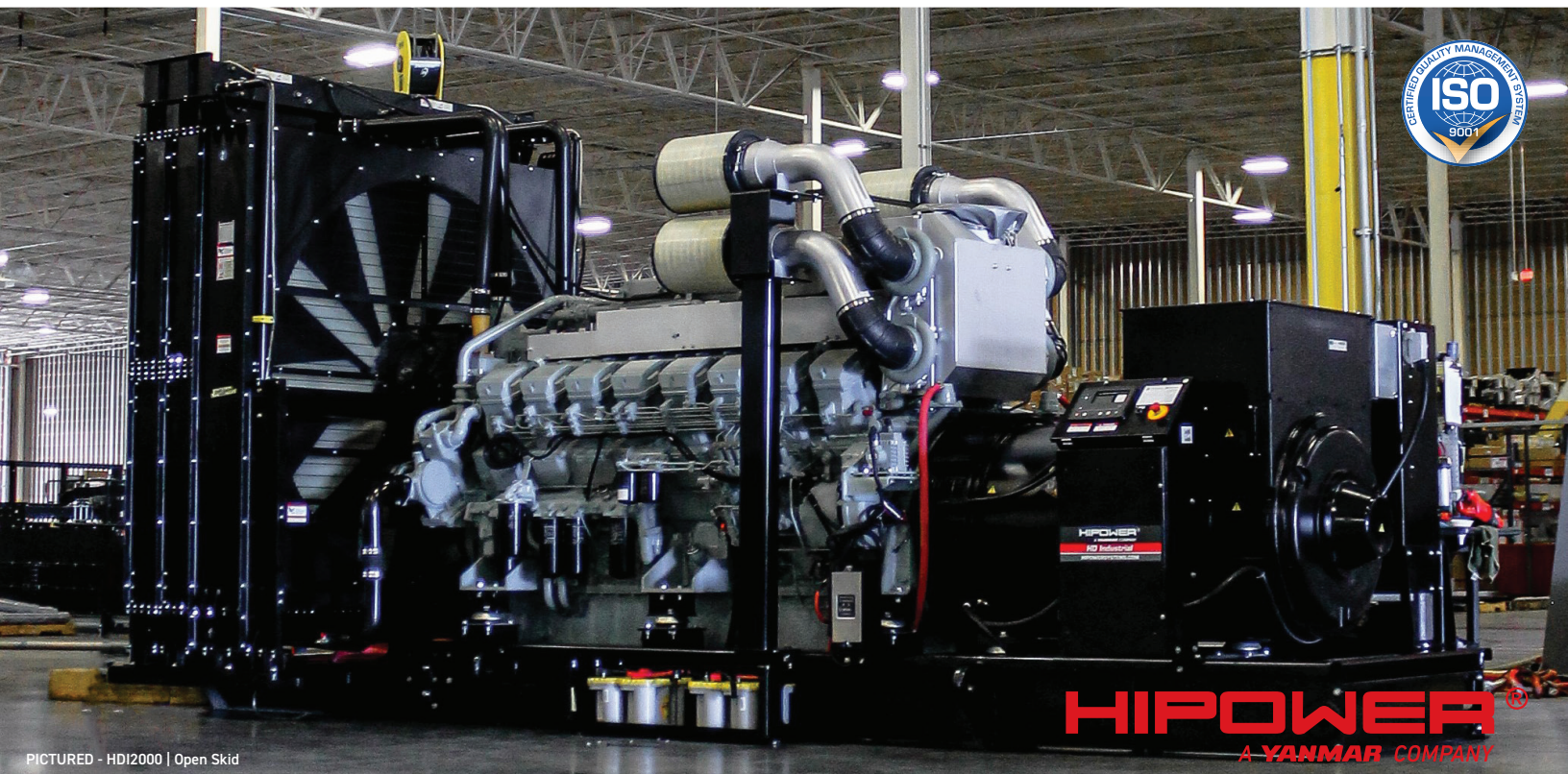
### Engine

Manufacturer		VOLVO	VOLVO	VOLVO	MHI	MHI	MHI	MHI	MHI
Model		TAD 1353GE	TAD 1641GE	TWD 1644GE	S12A2- Y2PTAW-2	S12H- Y2PTAW-1	S12R- Y2PTAW-1	S16R- Y2PTAW-1	S16R- Y2PTAW2-1
EPA Certified		Tier 3	Tier 2	Tier 2	Tier 2	Tier 2	Tier 2	Tier 2	Tier 2
Nominal Power	HP	585	748	876	1207	1528	1881	2346	2923

### Dimensions and Weight

Dimensions   L x W x H   Level 1	inches	186 x 68.5 x 84	207 x 68.5 x 93.1	230 x 94 x 115	252 x 106 x 129	282 x 110 x 145			
Weight   Level 1	lbs.	13000	14000	15000	21200	25400	33025	40050	42475

Specifications and designs are subject to change. Estimate weight; actual weight varies depending on options selected. Single phase available from HDI60 to HDI160. Other voltage configurations available upon request.



PICTURED - HDI2000 | Open Skid

**HIPOWER**  
A YANMAR COMPANY