

NPX

15D/17/20/22

ELECTRIC 24/36 VOLT
3000 / 3500 / 4000 / 4500 lbs.
(1350 / 1600 / 1800 / 2000 kg)



CLARK[®]



Rear posts add support to the overhead guard and help prevent objects from entering the operator compartment, helping to keep your employees as **safe** as possible.



Reliable Performance with State of the Art Technology

The CLARK NPX 100% AC design, matched with energy-efficient components, delivers improved acceleration, travel and lifting speeds, increasing productivity. Operators have greater control to move product with more confidence. Reliable components require less service lowering overall costs.

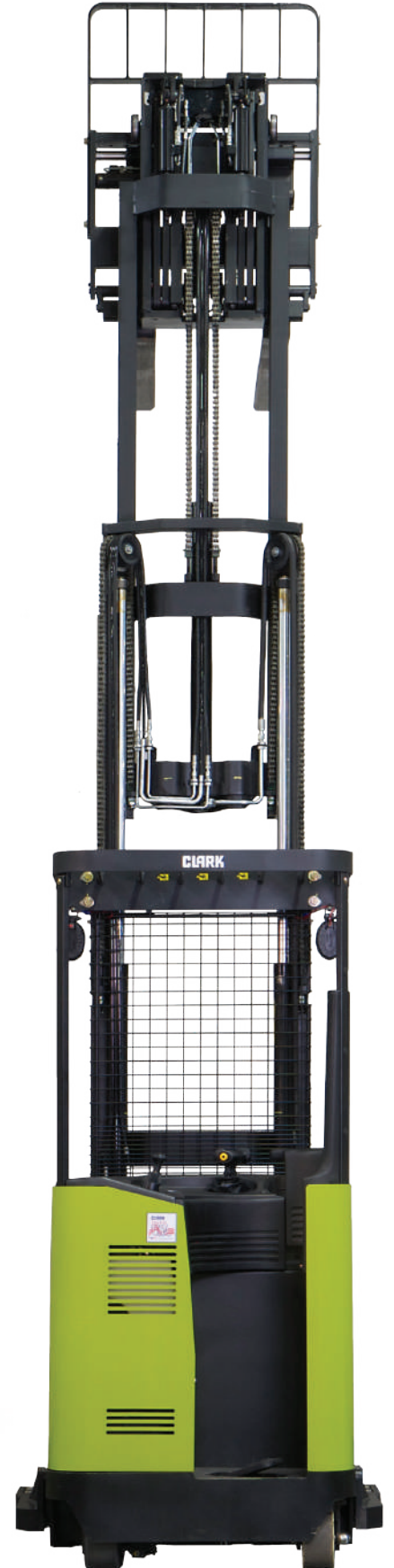
65°

The NPX operator compartment and controls are designed with the operator standing at 65 degrees from center. This provides the widest range of flexibility and visual confirmation when traveling and handling loads to maximize productivity

Silent-staging upright helps to reduce shock and vibration. Nested I-beam rails provide strength and rigidity. Cylinder and hose routing design provides open field of vision improving operator confidence.

Maximum Visibility + Minimum Fatigue =
Increased Safety & Product Integrity

The operator compartment is designed with comfort and productivity in mind. The contoured full-support backrest, padded armrest and tiller position are fully adjustable to customize the operator compartment reducing fatigue and maximizing productivity.



NPX Performance and Safety in Mind

Rugged and reliable the new CLARK NPX series forklift trucks offer superior controllability, excellent front and rear visibility and high-speed operation to help increase productivity and profit while at the same time helping to improve operator safety. And maintenance has been made easier than ever. For increased performance, count on the CLARK NPX.



NPX CAPACITY

NPX 15D 3,000 lbs

NPX 17 3,500 lbs

NPX 20 4,000 lbs

NPX 22 4,500 lbs

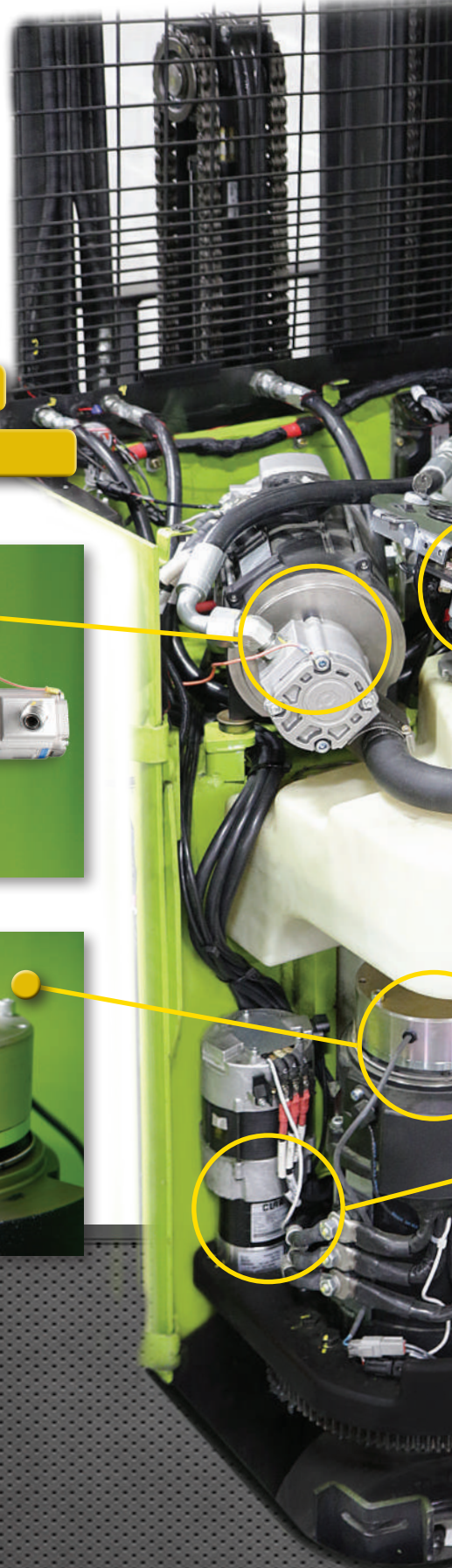
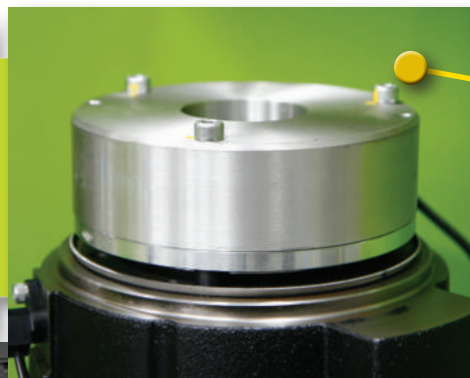
STATE OF THE ART TECHNOLOGY

- Advanced 100% AC motors and controllers.
- Electro-mechanical brakes.
- Electronic speed-sensitive power steering.
- High efficiency hydraulic system.



BRAKING

- Primary (electric) braking provided through electronic controller.
- Service brake engages automatically at zero travel.
- Electro-mechanical brake reduces components and complexity.
- Smooth, consistent braking in all load and travel conditions.

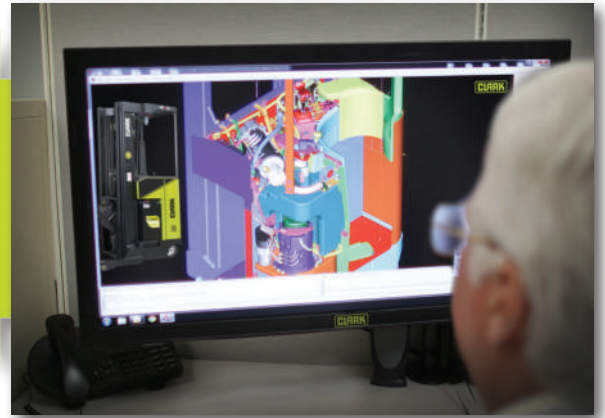


CALL OR VISIT CLARK TO LEARN MORE ABOUT THE NPX SERIES

North American Headquarters
866-252-5275 • www.clarkmhc.com

Design and Testing

At CLARK Material Handling Co. we have learned from over one hundred years designing and building forklifts that they need to be designed from the ground up to be reliable. We perform extensive testing to ensure that our electric forklift trucks meet high environmental standards and provide reliable operation in most environments. Testing of components, subassemblies and complete products goes hand in hand with all phases of the design and production cycle.



TRUE MULTIFUNCTION CONTROL

CLARK Designed Control Handle

- 3-Function design allows simultaneous operation of (1) travel, (2) lift or lower AND (3) one additional hydraulic function.

Integrated Mini-Thumbstick

- Controls Tilt & Reach + Side Shift.

Makes for One Smooth Operator

- Handle is 100% proportional using (solid state) Hall-effect components.
- Designed to fit a wide range of hand sizes and still give that "custom fit" feel for better ergonomics and less operator fatigue.

ELECTRONIC STEERING

- Speed-sensitive steering provides optimal control when transporting or positioning loads.
- Self-centering function aligns drive wheel at key-on.
- Tiller can be placed in preferred position by individual operator.
- Quiet and energy efficient.

Standard Equipment

- Key switch
- Load backrest extension
- Electronic horn
- Rear overhead guard post protection
- Heavy-duty battery rollers
- Battery retainers
- Lever type battery connect-disconnect
- Metal capacity plate

Available Equipment

- Side shifter
- Freezer conditioning
- Reverse steering
- Travel alarms
- Strobe warning lights
- Operating lights
- U.L. Classified EE rating

GENERAL DATA & STANDARD DIMENSIONS

Upright Table

Maximum Fork Height		Overall Height Lowered		Free Lift**	
in	mm	in	mm	in	mm
Triple Stage					
198	5029	89	2261	54	1372
210	5334	95	2413	60	1524
240	6096	107	2718	72	1829
258	6553	113	2870	78	1981
270	6858	119	3023	84	2134
300	7620	131	3327	96	2438
318	8077	139	3531	104	2642
• 330	8382	149	3785	114	2896
• 366	9296	161	4089	126	3200

For overall height raised with load backrest, add 48 in (1219 mm) to maximum fork height. Other uprights available, contact Clark representative. Uprights above 270" N/A on NPX17.

• NPX 15D, NPX 22 only.

Carriage Widths*/Fork Spread in(mm)

Carriage Width		Fork Spread w/o Side Shifter		Fork Spread w/ Side Shifter	
in	mm	max	min	max	min
33	838	31.0(787)	13.0(330)	27.7(704)	22.3(566)
37	940	35.0(889)	13.0(330)	27.7(704)	22.3(566)

* 37 in. wide carriages available with outrigger I.D. 38 in. and greater (40 in. and greater with 10.5 in. load wheels.)

NPX Min. Right Angle Stack Aisle in(mm)*

Pallet or Load Size Length x Width	Battery Compartment (L)			
	13.88(353)	16.13(410)	18.5(470)**	21.0(533)**
36x30(914x762)	82.2(2088)	84.1(2136)	86.8(2205)	89.0(2261)
42x36(1067x914)	87.1(2212)	89.2(2266)	92.1(2339)	94.5(2400)
36x40(914x1016)	82.0(2083)	83.9(2131)	86.8(2205)	89.0(2261)
40x40(1016x1016)	84.8(2154)	86.8(2205)	89.6(2276)	91.9(2334)
48x40(1219x1016)	93.0(2362)	95.1(2416)	98.2(2494)	100.6(2555)
48x42(1219x1067)	92.8(2357)	94.9(2410)	98.0(2489)	100.4(2550)
48x44(1219x1118)	92.6(2352)	94.7(2405)	97.7(2482)	100.2(2545)
48x48(1219x1219)	92.2(2342)	94.3(2395)	97.3(2471)	99.8(2535)

* Add 6 to 8 inches clearance for ease of operation. Dimensions are based on 42 inch I.D. outrigger with 5 x 3.76 in. load wheels and 4" clearance each side of load.

**Add 8" for NPX 15D (plus operating clearance).

Outrigger Dimensions - I.D./O.D. (in)

Dual 5 x 3.76 Load Wheels Toe Box Width 5.5 in		Dual 5 x 3.01 Load Wheels Toe Box Width 4.5 in		Single 10.5 x 4.5 Load Wheels Toe Box Width 6.0 in		Dual 4 x 2.62 Load Wheels Toe Box Width 4.5 in	
I.D.	O.D.	I.D.	O.D.	I.D.	O.D.	I.D.	O.D.
33	44	33	42	-	-	33	42
34	45	34	43	-	-	34	43
36	47	35	44	36.25	48.25	35	44
38	49	37	46	38.25	50.25	37	46
40	51	39	48	40.25	52.25	39	48
41	52	41	50	41.25	53.25	41	50
42	53	42	51	42.25	54.25	42	51
44	55	43	52	44.25	56.25	43	52
46	57	45	54	46.25	58.25	45	54
48	59	47	56	48.25	60.25	47	56
50	61	49	58	50.25	62.25	49	58
-	-	51	60	-	-	51	60

Outrigger Dimensions - I.D./O.D. (mm)

Dual 127 x 96 Load Wheels Toe Box Width 140mm		Dual 127 x 76 Load Wheels Toe Box Width 114mm		Single 267 x 114 Load Wheels Toe Box Width 152mm		Dual 102 x 67 Load Wheels Toe Box Width 114mm	
I.D.	O.D.	I.D.	O.D.	I.D.	O.D.	I.D.	O.D.
838	1118	838	1067	-	-	838	1067
864	1143	864	1092	-	-	864	1092
914	1194	889	1118	921	1226	889	1118
965	1245	940	1168	972	1276	940	1168
1016	1295	991	1219	1022	1327	991	1219
1041	1321	1041	1270	1048	1353	1041	1270
1067	1346	1067	1295	1073	1378	1067	1295
1118	1397	1092	1321	1124	1429	1092	1321
1168	1448	1143	1372	1175	1480	1143	1372
1219	1499	1194	1422	1226	1530	1194	1422
1270	1549	1245	1473	1276	1581	1245	1473
-	-	1295	1524	-	-	1295	1524

Battery Weights & Compartment Dimensions

Width (W)		Length (L)		Height (H)		Min. Weight	
in	mm	in	mm	in	mm	lbs.	kg
38.75	984	13.88	353	32.0	813	1590	721
38.75	984	16.13	410	32.0	813	1885	855
38.75	984	18.50	470	32.0	813	2175	987
38.75	984	21.00	533	32.0	813	2460	1116

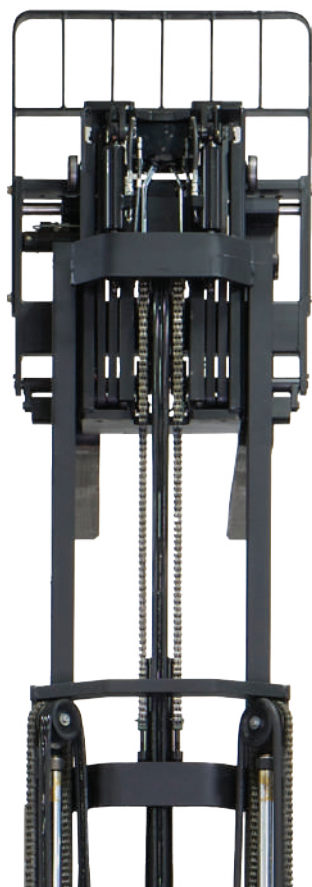
Maximum Battery Size

Width (W)		Length (L)		Height (H)	
in	mm	in	mm	in	mm
38.69	983	13.50	343	31.5	800
38.69	983	15.75	400	31.5	800
38.69	983	18.00	457	31.5	800
38.69	983	20.50	521	31.5	800

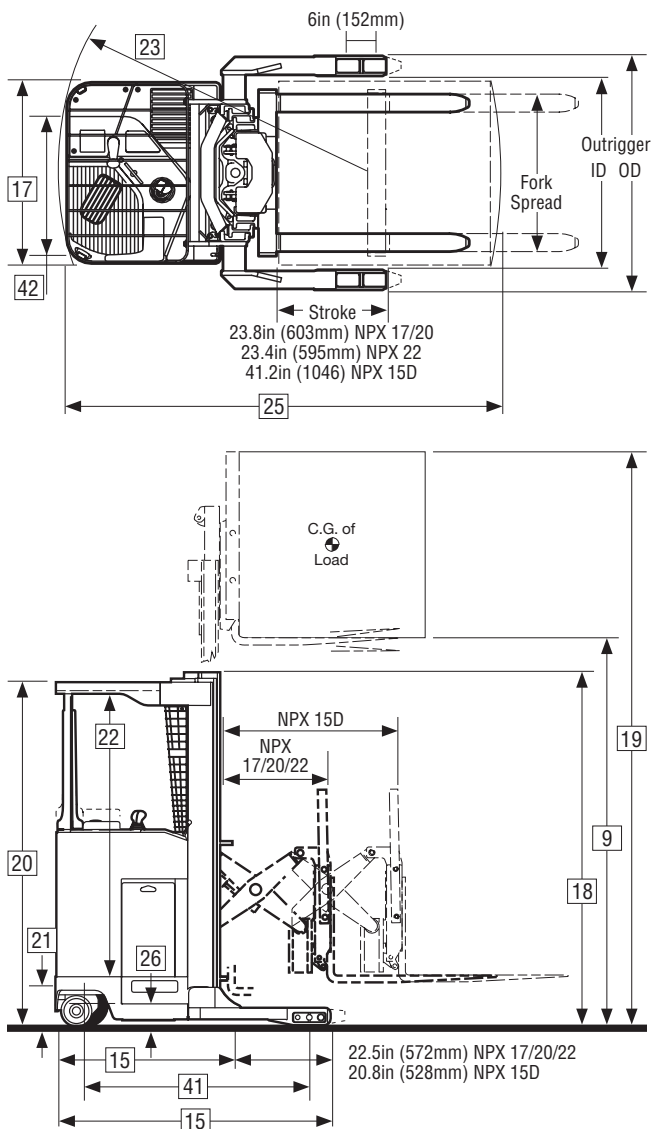
Operator Compartment/Overhead Guard Dimensions

Maximum Fork Height		Compartment Inside		Overhead Guard Height	
in	mm	in	mm	in	mm
198	5029	75	1905	89	2261
210	5334	81	2057	95	2413
240	6096	81	2057	95	2413
258	6553	81	2057	95	2413
270	6858	81	2057	95	2413
300	7620	81	2057	95	2413
318	8077	81	2057	95	2413
* 330	8382	81	2057	95	2413
* 366	9296	81	2057	95	2413

* NPX 15D, NPX 22 only.



STANDARD SPECIFICATIONS



For corresponding data see Specification Chart

ANSI/ITSDF and Insurance Classification

Standard truck meets all applicable mandatory requirements of Part III-ANSI/ITSDF B56.1 Safety Standard for Powered Industrial Trucks (latest edition at time of manufacture) and Underwriters Laboratories requirements as to fire and electrical shock hazard only for "E" classification. For further information contact a Clark representative.

Users should be aware of, and adhere to, applicable codes and regulations regarding operator training, use, operation and maintenance of powered industrial trucks, including:

- ANSI/ITSDF B56.1
- NFPA 505, fire safety standard for powered industrial trucks - type designations, areas of use, maintenance and operation.
- Occupational Safety and Health Administration (OSHA) regulations that may apply.

Contact your authorized CLARK forklift truck dealer for further information including operator training programs and auxiliary visual and audible warning systems, fire extinguishers, etc., as available for specific user applications and requirements.

Performance may vary +5% and -10% due to motor and systems efficiency tolerance. The performance shown represents nominal values which may be obtained under typical operating conditions of a standard machine.

Grade Clearance: The NPX is not designed for operation on or over grades. NPX is designed to operate on level ground only.

Specifications, equipment, technical data, photos and illustrations are based on information at time of printing and are subject to change without notice. Some products may be shown with optional equipment.

General Information	1	Manufacturer		
	2	Model	Manufacturer's Designation	
	3	Load Capacity		lbs(kg)
	4	Load Center	Fork Face to Load CG	in(mm)
	5	Power Unit	Electric	
	6	Operator Type		
	7	Tire Type		
	8	Wheels (x=driven)	Front/Rear	
Basic Dimensions ^{1,2}	9			
	10	Upright ³	Lift Height (Preferred Upright)	in(mm)
	11		Freelift	in(mm)
	12	Fork Tilt	Back/Forward	degrees
	13	Fork	Std. Fork Size (T x W x L)	in(mm)
	14	Carriage	Width of Carriage	in(mm)
	15	Overall Dimensions	Length to Fork Face	in(mm)
			Overall length, less forks	in(mm)
	16		Outrigger ID/OD	in(mm)
	17		Frame Width	in(mm)
	18		Height, Upright Lowered	in(mm)
	19		Height, Upright Extended	in(mm)
	20		Height, Overhead Guard	in(mm)
	21	Step Height	Ground to Top of Floor Plate	in(mm)
	22	Head Clearance	Top of Floor Plate to Bottom of OHG	in(mm)
23	Turning Radius		in(mm)	
24				
Performance	25	Right Angle Stack Aisle ⁴	48 in x 40 in pallet	in(mm)
	26	Battery Compartment	W x L x H	in(mm)
		Battery Roller Height	Ground to Top of Rollers	in(mm)
	27	Stability	According to ANSI	
	28	Speeds- Forks Trailing	Travel Speed, Max, With Load ⁵	mph(kph)
	29		Travel Speed, Max, Without Load ⁵	mph(kph)
Weights ²	30		Lift Speeds, Loaded	fpm(mps)
	31		Lift Speeds, Unloaded	fpm(mps)
	32		Lower Speeds, Loaded	fpm(mps)
	33		Lower Speeds, Unloaded	fpm(mps)
	34	Service Weight, TSU	W/Min Battery Weight	lbs(kg)
	35	Axle loading	With Load, Front	lbs(kg)
Chassis	36		With Load, Rear	lbs(kg)
	37		W/O Load, Front	lbs(kg)
	38		W/O Load, Rear	lbs(kg)
	39	Tires/Wheels	Number, Front/Rear	
	40		Size, Load Wheels	in(mm)
			Size, Rear Drive/Steer	in(mm)
Drive Line	41	Wheelbase		in(mm)
	42	Track	Rear	in(mm)
	43			
	44	Ground Clearance	With 5 in diameter load wheels	in(mm)
	45			
	46	Service Brake	Type	
	47	Parking Brake	Type	
		Steering	Type	
Drive Line	48	Battery	Type	
			Max Capacity (6 hr. Rate) 24V/36V	kWh
			Weight, Min	lbs(kg)
	49	Motors, Controls	Drive Motor, Diameter	in(mm)
			Hydraulic Motor, Diameter	in(mm)
			Steer Motor, diameter	in(mm)
		Drive Motor Control	Type	
		Speed Control	Type	
		Hydraulic Motor Control	Type	
		Steer Motor Control	Type	

- Notes: 1 Specifications are for truck with tandem 5 in (127 mm) diameter x 3.76 in (96mm) wide load wheels. Other sizes are also available.
 2 Specifications are for truck with 210 in (5334 mm) MFH upright, 42 in (1067 mm) outrigger ID and 33 in (838 mm) sideshifter (deduct 50 lb. (23kg) for weight less SS). Battery compartment dimensions as noted.
 3 See Upright Table for other available uprights.

CLARK NPX17	CLARK NPX20	CLARK NPX22	CLARK NPX15D
3500 (1600)	4000 (1800)	4500 (2000)	3000 (1350)
24 (600)	24 (600)	24 (600)	24 (600)
Dual 24 volt / 36 volt	Dual 24 volt / 36 volt	36 volt	36 volt
Rider Reach	Rider Reach	Rider Reach	Rider Double Reach
Solid	Solid	Solid	Solid
4/2 (1x)	4/2 (1x)	4/2 (1x)	4/2 (1x)
210 (5334)	210 (5334)	210 (5334)	210 (5334)
60 (1524)	60 (1524)	60 (1524)	60 (1524)
4/3	4/3	4/3	4/3
1.75 x 4 x 42 (44 x 102 x 1067)	1.75 x 4 x 42 (44 x 102 x 1067)	1.75 x 4 x 42 (44 x 102 x 1067)	1.75 x 4 x 42 (44 x 102 x 1067)
33 (838)	33 (838)	33 (838)	33 (838)
48.1 (1222)	48.1 (1222)	51.1 (1298)	61.0 (1550)
70.25 (1784)	70.25 (1784)	75.9 (1928)	81.8 (2078)
See Outrigger Dimension Chart	See Outrigger Dimension Chart	See Outrigger Dimension Chart	See Outrigger Dimension Chart
40.25 (1022)	40.25 (1022)	40.25 (1022)	40.25 (1022)
95 (2413)	95 (2413)	95 (2413)	95 (2413)
258 (6553)	258 (6553)	258 (6553)	258 (6553)
95 (2413)	95 (2413)	95 (2413)	95 (2413)
12.2 (310)	12.2 (310)	12.2 (310)	12.2 (310)
81 (2057)	81 (2057)	81 (2057)	81 (2057)
66.5 (1689)	66.5 (1689)	69.7 (1770)	76.14 (1934)
93 (2362)	93 (2362)	98.2 (2494)	106 (2692)
38.75x13.88x32 (984x353x813)	38.75x13.88x32 (984x353x813)	38.75x18.5x32 (984x470x813)	38.75x18.5x32 (984x470x813)
6.25 (159)	6.25 (159)	6.25 (159)	6.25 (159)
Yes	Yes	Yes	Yes
6.8 (10.9) / 7.5 (12.0)	6.6 (10.6) / 7.5 (12.0)	7.5 (12.0)	7.5 (12.0)
7.5 (12.0) / 7.5 (12.0)	7.5 (12.0) / 7.5 (12.0)	7.5 (12.0)	7.5 (12.0)
69 (.35) / 98 (.50)	67 (.34) / 92 (.47)	77 (0.39)	105 (0.53)
115 (.58) / 130 (.66)	115 (.58) / 130 (.66)	130 (0.66)	130 (0.66)
105 (.53)	105 (.53)	105 (.53)	105 (.53)
95 (.48)	95 (.48)	95 (.48)	95 (.48)
6620 (3002)	6900 (3129)	7988 (3623)	8367 (3795)
6402 (2903)	7025 (3186)	8274 (3752)	6714 (3045)
3718 (1686)	3875 (1757)	4214 (1911)	4653 (2110)
2570 (1166)	2645 (1200)	3091 (1402)	3259 (1478)
4050 (1837)	4255 (1930)	4897 (2221)	5108 (2317)
4/2	4/2	4/2	4/2
(4) 5 x 3.76 urethane (127x96)	(4) 5 x 3.76 urethane (127x96)	(4) 5 x 3.76 urethane (127x96)	(4) 5 x 3.76 urethane (127x96)
13.5 x 5.5 rubber (343 x 140)	13.5 x 5.5 rubber (343 x 140)	13.0 x 5.5 urethane (330 x 140)	13.0 x 5.5 urethane (330 x 140)
8 x 4 urethane (203 x 102)	8 x 4 urethane (203 x 102)	8 x 4 urethane (203 x 102)	8 x 4 urethane (203 x 102)
56.1 (1425)	56.1 (1425)	61.7 (1567)	65.75 (1670)
28.7 (729)	28.7 (729)	28.7 (729)	28.7 (729)
1.75 (44)	1.75 (44)	1.75 (44)	1.75 (44)
Regenerative Auto-Electro-Magnetic	Regenerative Auto-Electro-Magnetic	Regenerative Auto-Electro-Magnetic	Regenerative Auto-Electro-Magnetic
Power	Power	Power	Power
Lead-Acid	Lead-Acid	Lead-Acid	Lead-Acid
28.9 / 27.0	28.9 / 27.0	37.6	37.6
1590 (722)	1590 (722)	2175 (987)	2175 (987)
7.9 (200)	7.9 (200)	7.9 (200)	7.9 (200)
6.7 (170)	6.7 (170)	6.7 (170)	6.7 (170)
4.2 (106.5)	4.2 (106.5)	4.2 (106.5)	4.2 (106.5)
AC Induction Motor Controller Solid State	AC Induction Motor Controller Solid State	AC Induction Motor Controller Solid State	AC Induction Motor Controller Solid State
AC Induction Motor Controller	AC Induction Motor Controller	AC Induction Motor Controller	AC Induction Motor Controller
AC Induction Motor Controller	AC Induction Motor Controller	AC Induction Motor Controller	AC Induction Motor Controller

4 Right angle stacking aisle for pallet size shown. Add 6-8 in (152-203 mm) for operating clearance. See "General Data" for other pallet sizes.

5 Travel speed reduced to 6.75 mph (10.8 kph) when traveling forks leading.



& Don't Forget... **Safety Starts With You!**

Before operating a lift truck, an operator must:

- Be trained and authorized
- Read and understand operator's manual
- Not operate a faulty lift truck
- Not repair a lift truck unless trained and authorized
- Have the overhead guard and load backrest extension in place
- Perform daily inspections

During operation, a lift truck operator must:

- Keep feet, legs and all parts of body inside operator compartment
- Never carry passengers or lift people
- Keep truck away from people and obstructions
- Travel with lift mechanism as low as possible and tilted back
- Allow safe stopping distance and come to a complete stop before leaving operator compartment

To park a lift truck, an operator must:

- Completely lower forks or attachments
- Turn key off

- We don't just build forklifts. As a company, we are also focused on providing our customers with the best possible technical service support and aftermarket parts available.
- Even though our business starts with a quality, cost-effective product, our organization understands that it is the support and services we provide after the sale that help keep your business running at peak efficiency.
- **THE CLARK PartsPRO Plus® SYSTEM** is our industry-leading electronic parts and service documentation tool that provides dealers with a quick and accurate method of identifying parts for every CLARK forklift built since 1961. PartsPRO® ensures the availability of the most current technical information and has the unique capability to create parts manuals specific to your mixed CLARK fleet, making it simple to positively identify and order the correct part(s) from your local CLARK dealer. The right CLARK part — The First Time, Every Time.
- **UNRIVALED PARTS SUPPORT** Our Aftermarket Distribution Center provides parts to over 250 North American CLARK dealer locations and many international dealers. This CLARK operated 184,000 square foot facility is dedicated to supporting the CLARK models built over the last 90 years. This facility is focused on providing excellent off-the-shelf availability, quality parts, quick response time and competitive pricing.

DEPENDABLE PARTS = DEPENDABLE TRUCKS

To Find Your Nearest Authorized CLARK Dealer, Visit Our Website www.clarkmhc.com



BUILT TO LAST.



CLARK MATERIAL HANDLING COMPANY
 North American Headquarters
 700 Enterprise Drive • Lexington, KY 40510
 866-252-5275 • www.clarkmhc.com

NPX15D/17/20/22
 59-894-1055 Printed in USA MP03155M

© 2015 CLARK Material Handling Company