

RIDING LAWN TRACTORS

100, 200, X300, X500, AND X700 Series



JOHN DEERE



FROM MOW TO SNOW
View Our Snow Removal Equipment Inside

RIDING LAWN TRACTORS

Takes the *HARD WORK* out of *LAWN WORK*

Make the most of your mowing, and more. Our lawn tractors handle any job on your to-do list. Haul, plow, bag or mulch—with our range of attachments and options, you can count on a quality cut, all year round. Each lawn tractor has different feature and slope operating limits. Never exceed those limits. Not all areas are appropriate for riding mowers.



The Accel Deep™ mower deck. Tough with a precision cut. The Accel Deep™ mower decks provide a superior cut quality. The deep deck design creates a vacuum force that lifts every blade of grass for a smooth, even cut. Plus, these 48- and 54-inch wide mowers are forged from a heavy-duty 10-gauge steel for maximum durability. That's the same thickness they make safes from.



MulchControl™ Kit with One Touch Technology. Mulch on. Mulch off. Mulch the easy way with the push of a button. Available with Accel Deep™ Mower Decks on Select Series Tractors.



Great lawn care has gone high tech. The John Deere MowerPlus™ app helps keep your John Deere riding lawn equipment running well and your lawn looking great. Available at the App Store® or Google Play™ store. US only.



Cutting Height Adjuster. Cutting height can be adjusted in ¼-in. (0.64-cm) increments for a precise, even cut.



Twin Touch™ System. Twin Touch™ automatic transmission lets you easily change from forward to reverse with two-pedal foot control for effortless speed and direction changes. (Available on Select Series and Signature Series Tractors.)



30-Second Oil Change System

Groundbreaking. We've changed the oil change with the John Deere Easy Change™ 30-Second Oil Change System on select 100 Series models.

*Changing the filter removes the captured contaminants and replaces about 0.8 qt (0.76 L) of engine oil.

X700 SIGNATURE SERIES

Engine – High-performance electronic fuel injected (EFI) gas engines and Final Tier 4 diesel engines offer torque and power to spare.

Optional MulchControl™ Kit – Mulch the easy way—with the flip of a lever.

Steering Wheel – Standard tilt steering adjusts to your height and delivers the ultimate in comfort.



Air Ride Seat Option – Effortlessly adjust the seat suspension to your liking with the flip of a switch.



Stylish Hood – The exclusive design provides superior cooling and durability.

Mower Deck – The 48-in. Accel Deep™ Mower Deck is perfect for narrow pathways and gate entrances, while our 54- and 60-in. High-Capacity decks are solid stamped out of 9-gauge steel.

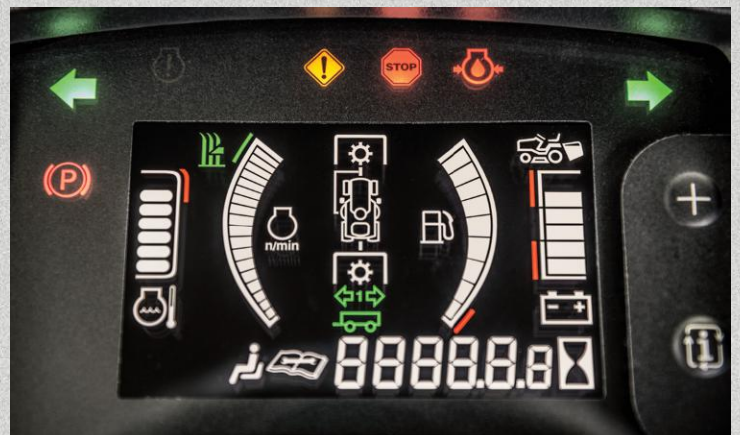
12-Volt Outlet – Plug in a sprayer or an electric spreader.

Tool Box – Storage for work gloves or sunglasses to your cell phone.

Power Steering – Easily maneuver throughout your yard. Power steering is standard on all X700 Series.



Tough with a precision cut. The Accel Deep™ mower decks provide a superior cut quality. The deep deck design creates a vacuum force that lifts every blade of grass for a smooth, even cut. Plus, these 48- and 54-inch wide mowers are forged from a heavy-duty 10-gauge steel for maximum durability. That's the same thickness they make safes from.



The Dashboard Approach. Electronic Fuel Gauge. Engine Temperature Gauge. Tachometer with Best Cut Target Zone. An Electric Power Take-Off (PTO) engagement indicator. All at a glance and within easy reach.

THERE'S ALWAYS SOMETHING TO DO AROUND THE YARD.

Productivity and versatility are key to how we run, too. That's why the Signature Series is engineered to till, mulch, haul, bag, plow, fertilize, seed, sweep and, of course, mow. You just need the right attachment or implement.

Adding a 3-point hitch is a great place to start. Put our heavy-duty transmission and thick C-channel frame to the test and take on the toughest yard jobs. That's how we run. Nothing runs like a Deere.

BUMPER-TO-BUMPER **4-YEAR /700-HOUR** **WARRANTY****

**Term limited to 4 years or 700 hours used, whichever comes first, and varies by model. See the LIMITED WARRANTY FOR NEW JOHN DEERE TURF AND UTILITY EQUIPMENT at JohnDeere.com or www.JohnDeere.ca/TUWarranty for details.



With an AutoConnect deck, attaching and removing your mower deck is easier than ever. Drive over ramps can quickly be removed, without tools, for access to mower deck.

X500 SELECT SERIES

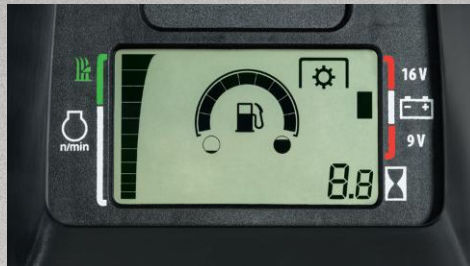


MULTI-TERRAIN AND MULTI-TALENTED.

The X500 Series lets you mow with precision, faster. But a quality cut is just the start of what the tractors can do. Tow a cart or mulch your lawn, negotiate muddy areas with complete confidence, and go where you need to go. Heavy-duty frames support heavy-duty work. Increase traction with foot-operated traction control. Add the optional MulchControl Kit to make feeding your lawn a snap.



High-Back Comfortable Seat. Features a 4-bar scissor suspension that completely lifts seat platform and soaks up impact from bumpy terrain for a smooth, comfortable ride. Standard on the X580, X584, X590.



Easy-To-Read Display. Displays engine speed and target zone for best cut quality.



Traction Assist. Locks the rear transaxle, so both rear wheels work together with maximum traction. Exceptionally effective at climbing or negotiating muddy ground.

Hydraulic Power Steering.

Makes 4-wheel steering even easier and provides excellent maneuverability. 12-inch (30 cm) uncut circle radius on the X584 with 54-in. mower. (Standard on the X580, X584, X590).

Four-wheel steering.

All four wheels on the X584 steer the tractor for ultimate trimmability.

MulchControl™ Kit with One Touch Technology. Available with Accel Deep™ Mower Decks on Select Series Tractors.

Accel Deep™ Mower Decks.

The deeper “draw” and flat top design create a better quality of cut at faster ground speeds.

21-in. (53 cm) cut and sewn seat with spring suspension provides a smooth comfortable ride on uneven terrain (Standard on the X580, X584, and X590).

Control console. Ergonomic design and color-coded for easy identification.

X590 Electronic Throttle Control. Instantly responds to deliver engine power and eliminate bogging down.

iTorque™ Power System. Provides plenty of power and torque for excellent performance in any operating condition.

BUMPER-TO-BUMPER
4-YEAR /500-HOUR
WARRANTY™

**Term limited to 4 years or 500 hours used, whichever comes first, and varies by model. See the LIMITED WARRANTY FOR NEW JOHN DEERE TURF AND UTILITY EQUIPMENT at JohnDeere.com or www.JohnDeere.ca/TO/Warranty for details.

X300 SELECT SERIES

PERFORMANCE MEETS POWER

Get a beautiful cut in a matter of minutes with the X380 lawn tractor. With the comfortable 18-in cut-and-sewn seat standard and optional 48- and 54-inch forged Accel Deep™ Mower Decks that cut clean, even passes at faster speeds. Add a Utility Cart to haul away most anything a lawn can throw at you.



Easy-To-Read Display. Displays engine speed and target zone for the best cut quality.



Exact Adjust Deck Leveling System. This exclusive feature allows you to conveniently level the deck from just below the seat.



Twin Touch System. Automatic transmission lets you easily change from forward to reverse with two-pedal foot control.



Four-wheel steering. Designed for ultimate trimmability. All four wheels steer the tractor instead of just the front two. Available on X354, X384, X394.



Rear collection. For the cleanest looking lawns, choose either a bagger attachment or the custom-engineered X350R dedicated rear-bagging tractor.



MulchControl™ Kit with One Touch Technology. Cut grass clippings down to size, so they are easily absorbed in your lawn. Or side discharge or bag.

BUMPER-TO-BUMPER

4-YEAR /300-HOUR

WARRANTY**

**Term limited to 4 years or 300 hours used, whichever comes first, and varies by model. See the LIMITED WARRANTY FOR NEW JOHN DEERE TURF AND UTILITY EQUIPMENT AT JohnDeere.com or www.JohnDeere.ca/TUWarranty for details.

200 SERIES

PREMIUM PERFORMANCE. WITHOUT THE PREMIUM PRICE

The 200 Series comes loaded with everything to make lawn care a labor of love. The comfort of a wide, welcoming operator station and an open, high-back seat. The performance of side-by-side forward and reverse pedals, a rip-roaring V-Twin engine and either 42-in or 48-in Accel Deep™ Mower Deck with optional MulchControl™ Kit. And to make sure the mower deck lasts as well as it cuts, the 48-inch mower is forged from 10-gauge steel. The same thickness they make safes from. The only thing you maybe won't love? Trying to decide which one's perfect for you.

Comfortable, open-back seat

to capture breezes, keeping you cool.

42-in. (107 cm) and 48-in. (122-cm) Accel Deep™ Mower Decks S220 comes standard with 42-in. Accel Deep™ and S240 has the option for a 42-in. or 48-in. Accel Deep™ Mower Deck. The deep "draw" and flat top design create a quality of cut at faster ground speeds.

Side-by-side pedals.

Side-by-side pedals. Effortless speed and direction changes.

Large, turf-friendly tires

for a smooth ride and easy turns.

Powerful, smooth running

22 hp* (16.4 kW) and 21.5 hp* (16 kW) premium V-twin engines, the kind you find in our Select Series models.

¼-in. height-of-cut

adjustment. Easily adjust for a precision cut.



*The engine horsepower and torque information are provided by the engine manufacturer to be used for comparison purposes only. Actual operating horsepower and torque will be less. Refer to the engine manufacturer's web site for additional information.

BUMPER-TO-BUMPER 3-YEAR / 200-HOUR WARRANTY**

**Term limited to 3 years or 200 hours used, whichever comes first, and varies by model. See the LIMITED WARRANTY FOR NEW JOHN DEERE TURF AND UTILITY EQUIPMENT AT JohnDeere.com or www.JohnDeere.ca/TUWarranty for details.



Easy-Read Fuel Gauge At arm's reach. And beyond expectations.

Always be in the know. The easy-read fuel gauge gives confidence in having enough gas to finish the job. The fuel level is easy to see on the dashboard in bright or low light and it won't bounce around while driving. With an optional smart connector installed, the gauge updates the MowerPlus app about the fuel, battery state, and engine hours. Available on S240.



100 SERIES



YOUR LAWN WILL THANK YOU

Assembled in Greeneville, TN, our 100 Series Lawn Tractors are our affordable, comfortable, easy-to-use lawn tractor line-up. Lift the hood and check out the Easy Change™ 30-Second Oil Change System, standard on several models. This all-in-one oil and oil filter* is so easy to take off and put on, you can be done in 30 seconds, max. No mess.

No fuss. No problem. Twist. Lock. Done.

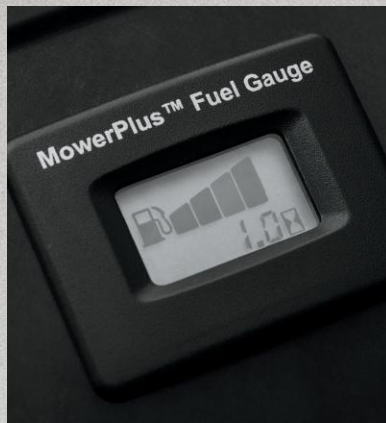
Then step on it. The two side-by-side forward and reverse pedals available on all 100 Series are made for your right foot. Now, sit down. The ergonomic operator station is welcoming. The seat, adjustable. The design of the mower deck lift is even shaped to minimize the effort required to raise or lower the deck. And that's just for starters.



ASSEMBLED IN
GREENEVILLE,
TENNESSEE USA.



BUMPER-TO-BUMPER
2-YEAR /120-HOUR
WARRANTY**



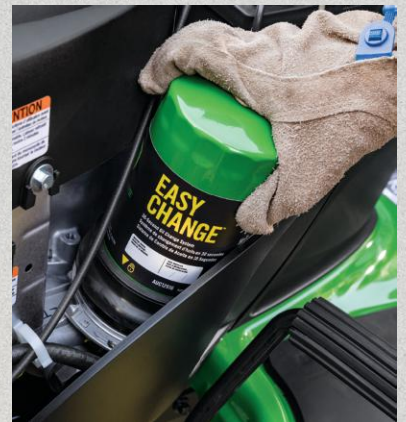
Easy read fuel gauge.
(available on S120, S130, S160, S170 and S180).



15-in lumbar seat.
(available on S160, S170, S180).



Electric PTO.
Available on some models, provides instant engagement of mower blades. (available on all models from S130 and above).



**John Deere Easy Change™
30-Second Oil Change System.**
No mess. No fuss. No problem. The oil and oil filter are all-in-one.* Twist. Lock. Done. (available on S120, S130, S160, S170, S180).



The convenient mower deck lift lever.
¼-in. (0.64-cm) height-of-cut increment adjustment is as precise as ever.



Side-by-side pedals.
Easily change from forward to reverse with two-pedal foot control available on all 100 Series Lawn Tractors.

*Changing the filter removes the captured contaminants and replaces about 0.8 qt (0.76 L) of engine oil.

**Term limited to 2 years or 120 hours used, whichever comes first, and varies by model. See the LIMITED WARRANTY FOR NEW JOHN DEERE TURF AND UTILITY EQUIPMENT at JohnDeere.com or www.JohnDeere.ca/TUWarranty for details.

†Assembled with foreign and domestic parts.

X700 SIGNATURE SERIES
SNOW REMOVAL EQUIPMENT

HEAVY SNOWFALL MEETS ITS MATCH



The 47- and 54-in. two-stage Quick-Hitch Snow Blowers let you easily lift and lower the blower with your tractor hydraulics. Add optional remote deflector cap to place snow with your fingertips.



Get year-round usage with the 52-in. Quick Hitch Rotary Broom or 60-in. Heavy Duty Broom. Both models feature floating heads to make a clean sweep of snow and slush-covered paths and driveways.



Optional ROPS hard-side cab, available on the X700 Series, ensures that the cold outside stays outside. Easy open and close doors latch and even lock. The front glass windshield wiper keeps your view clear during wet flurries.



The optional Quick Hitch will have you moving snow in minutes. Simply drive-in and attach the Quick-Hitch Snow Blower, Front Broom or Blade, then hook up the hydraulics to the tractor and you're done.

*X300 AND X500 SELECT SERIES
SNOW REMOVAL EQUIPMENT*



GO FROM MOW TO SNOW



The X500 Select Series powerful 47-in. Snow Blower makes quick work of cleanup. A 200-degree chute rotation lets you change snow blowing direction as the wind shifts. Spout deflector helps you adjust snow throwing distance.



The X300 and X500 Select Series Tractor's 44-in. Snow Blower clears large driveways quickly. Use the tractor's foot-pedal or hydraulic lift system to raise and lower the blower for easy re-positioning when clearing wide areas. Deflector cap can be adjusted from your seat.



Plow Markers make maneuvering in deep snow easier. These reflective markers help provide visibility to the edge of your blade during swirling snowstorms.



Get year-round usage from the 44-in. Front Blade for the X300 series. A 3-in. (8-cm) floating action is built-in to allow the blade to follow the contour of the ground for complete cleaning action.



Heavy-duty 48-in. front blade for the X394 and X500 Series clears the way. Blade can easily be angled from the comfort of your seat, choose from 5 positions.



Optional **remote blade angling kit** lets you easily angle blade from the comfort of your seat, on-the-go. A helpful feature when clearing wide driveways and paths.

S100 AND S200 SERIES
SNOW REMOVAL EQUIPMENT

CLEAR THE WAY
EVERY SEASON



Ditch the shovel and save your back when clearing sidewalks and driveways with the **44-in. Snow Blower for S100 and S200 Series Tractors**. You can even stay seated while manually angling the chute, lifting or lowering the blower.



Don't leave your S100 or S200 Series in the garage over winter, equip it with a **46-in Front Blade** and you can push back on winter. This easy-to-use blade can be angled, lifted and lowered from the seat.

ENHANCE YOUR EQUIPMENT



Whether you have a front blade or a snow blower, **Tire Chains** give you that extra bit of traction that's needed during slippery conditions.



Get the most out of your snow removal equipment by adding rear **Suitcase Weights**. Simply install a weight bracket and hook on the 42-lb. weights for extra traction in icy, snowy conditions.



Keep blowing snow and howling wind at bay with a **Weather Enclosure**. Zip up the doors and windows to keep Jack Frost from nipping at your nose.



Optional **Electric Implement Lift** gives you fingertip control of raising and lowering your implements.

ATTACHMENTS

GET READY TO GET ATTACHED.

Keep your John Deere Riding Lawn Tractor busy all year even when your lawn is covered in snow. Our incredible spectrum of attachments can practically transform your mower into a different machine. Bagging or spreading. If you've got the task, we've got the attachment.



Spreader

Whether you're spreading lime or fertilizer, you can comfortably get your lawn in perfect shape while staying seated with a spreader. Choose from broadcast tow-behind spin spreaders or tractor-mounted drop spreaders. Many models even spread sand for making winter sidewalks and paths safer.



Utility cart

No more trips back and forth when updating garden beds and working on large yard projects. Simply hook up a Utility Cart to your rear tractor hitch and start hauling mulch, flowers and more. Choose from a wide range of carts with capacities from 7 up to 21 cu ft (.20-.59 m³).



2-bag Bagger

Leave a clipping-free finish or take on those pesky fall leaves with a 2-bag, 6.5-bu (229-L) Bagger. Rear hopper opens to reveal 2 easy-to-remove bags. Handle on bottom of bags makes easier emptying. No-tools installation ensures you can get the bagger on and off yourself.

Specifications

X730

X734 (4WS)

X738 (4WD)

POWER SYSTEMS

Model Number	FD750D EFI iTorque™ Power System	FD750D EFI iTorque™ Power System	FD750D EFI iTorque™ Power System
Engine Power	25.5 hp* (19 kW)	25.5 hp* (19 kW)	25.5 hp* (19 kW)
Displacement	45.5 cu in. (745 cc)	45.5 cu in. (745 cc)	45.5 cu in. (745 cc)
Cooling	Liquid	Liquid	Liquid
Cylinders	V-Twin	V-Twin	V-Twin

SLOPE

Slope Operating Limit****	18 degrees	18 degrees	18 degrees
---------------------------	------------	------------	------------

FUEL SYSTEM

Capacity	5.2 U.S. gal. (19.7 L)	5.2 U.S. gal. (19.7 L)	5.2 U.S. gal. (19.7 L)
Fuel Type	Gasoline	Gasoline	Gasoline

IGNITION

	Electronic	Electronic	Electronic
Electrical System	20 amp, regulated	20 amp, regulated	20 amp, regulated
Fuel Delivery System	Electronic fuel injection	Electronic fuel injection	Electronic fuel injection

TRANSMISSION

Drive System	Hydrostatic, 2-wheel drive	Hydrostatic, 2-wheel drive	Hydrostatic, Full-time 4-wheel drive
Forward Speed	8.5 mph (13.7 km/h)	8.5 mph (13.7 km/h)	8.5 mph (13.7 km/h)
Reverse Speed	6 mph (9.7 km/h)	6 mph (9.7 km/h)	6 mph (9.7 km/h)

BRAKES

	Internal wet disc	Internal wet disc	Internal wet disc
--	-------------------	-------------------	-------------------

STEERING

	Power, 2-wheel steer	Power, 4-wheel steer	Power, 2-wheel steer
--	----------------------	----------------------	----------------------

TURNING RADIUS

	25 in. (635 mm)	21 in. (533 mm)	25 in. (635 mm)
--	-----------------	-----------------	-----------------

UNCUT CIRCLE RADIUS

	28 in. (711 mm) w/ 60-in. HC Mower	6 in. (152 mm) w/ 60-in. HC Mower	28 in. (711 mm) w/ 60-in. HC Mower
--	------------------------------------	-----------------------------------	------------------------------------

SEAT

	21 in. (533 mm) 2-piece adjustable back angle	21 in. (533 mm) 2-piece adjustable back angle	21 in. (533 mm) 2-piece adjustable back angle
--	-----------------------------------------------	-----------------------------------------------	-----------------------------------------------

TIRES

Front	Turf 18x8.50-8	Turf 18x7.00-8	Heavy-Duty All Purpose 18x8.50-10
Rear	Turf 26x12-12	Turf 26x10.50-12	Heavy-Duty All Purpose 26x12-12

LIFT SYSTEM

	Power	Power	Power
--	-------	-------	-------

PTO

	Hydraulic clutch	Hydraulic clutch	Hydraulic clutch
--	------------------	------------------	------------------

DIMENSIONS

Height (Seat Height)	54.5-in. (1384 mm)	54.5-in. (1384 mm)	54.5-in. (1384 mm)
Length, Overall	75 in. (1905 mm)	75 in. (1905 mm)	75 in. (1905 mm)
Min. Storage Width (Chute Up)	62 in. (1575 mm) w/ 60-in. Mower	57.5 in. (1461 mm) w/ 54-in. Mower	62 in. (1575 mm) w/ 60-in. Mower
Wheelbase	54.5 in. (1384 mm)	54.5 in. (1384 mm)	55.7 in. (1415 mm)
Weight, Approx.	1,078 lb (489 kg) w/ 54-in. Mower	1,133 lb (514 kg) w/ 54-in. Mower	1,168 lb (530 kg) w/ 54-in. Mower

MOWER OPTIONS

Cutting Width	Forged 48 in. Accel Deep™ Mower (1219 mm) 54 in. High Capacity (1372 mm) 60 in. High Capacity (1524 mm)	Forged 48 in. Accel Deep™ Mower (1219 mm) 54 in. High Capacity (1372 mm) 60 in. High Capacity (1524 mm)	Forged 48 in. Accel Deep™ Mower (1219 mm) 54 in. High Capacity (1372 mm) 60 in. High Capacity (1524 mm)
---------------	---------------------------------------------------------------------------------------------------------------	---------------------------------------------------------------------------------------------------------------	---------------------------------------------------------------------------------------------------------------

BUMPER-TO-BUMPER WARRANTY**

	4 year / 700 hours	4 year / 700 hours	4 year / 700 hours
--	--------------------	--------------------	--------------------

**** Attachments may reduce Slope Operating Limit. See Operator's Manual.



X739
(4WD, 4WS)

X750

X754
(4WS)

X758
(4WD)

FD750D EFI iTorque™ Power System	3TNM74F 3-cylinder Diesel	3TNM74F 3-cylinder Diesel	3TNM74F 3-cylinder Diesel
25.5 hp* (19 kW)	24 hp* (17.9 kW)	24 hp* (17.9 kW)	24 hp* (17.9 kW)
45.5 cu in. (745 cc)	60.6 cu in. (993 cc)	60.6 cu in. (993 cc)	60.6 cu in. (993 cc)
Liquid	Liquid	Liquid	Liquid
V-Twin	3	3	3
18 degrees	18 degrees	18 degrees	18 degrees
5.2 U.S. gal. (19.7 L)	5.2 U.S. gal. (19.7 L)	5.2 U.S. gal. (19.7 L)	5.2 U.S. gal. (19.7 L)
Gasoline	Diesel	Diesel	Diesel
Electronic	N/A	N/A	N/A
20 amp, regulated	40 amp, regulated	40 amp, regulated	40 amp, regulated
Electronic fuel injection	Indirect injection	Indirect injection	Indirect injection
Hydrostatic, Full-time 4-wheel drive	Hydrostatic, 2-wheel drive	Hydrostatic, 2-wheel drive	Hydrostatic, Full-time 4-wheel drive
8.5 mph (13.7 km/h)	8.5 mph (13.7 km/h)	8.5 mph (13.7 km/h)	8.5 mph (13.7 km/h)
6 mph (9.7 km/h)	6 mph (9.7 km/h)	6 mph (9.7 km/h)	6 mph (9.7 km/h)
Internal wet disc	Internal wet disc	Internal wet disc	Internal wet disc
Power, 4-wheel steer	Power, 2-wheel steer	Power, 4-wheel steer	Power, 2-wheel steer
21 in. (533 mm)	25 in. (635 mm)	21 in. (533 mm)	25 in. (635 mm)
6 in. (152 mm) w/ 60-in. HC Mower	28 in. (711 mm) w/ 60-in. HC Mower	6 in. (152 mm) w/ 60-in. HC Mower	28 in. (711 mm) w/ 60-in. HC Mower
21 in. (533 mm) 2-piece adjustable back angle	21 in. (533 mm) 2-piece adjustable back angle	21 in. (533 mm) 2-piece adjustable back angle	21 in. (533 mm) 2-piece adjustable back angle
Heavy-Duty All Purpose 18x8.50-10	Turf 18x8.50-8	Turf 18x7.00-8	Heavy-Duty All Purpose 18X8.50-10
Heavy-Duty All Purpose 26x12-12	Turf 26x12-12	Turf 26x10.50-12	Heavy-Duty All Purpose 26x12-12
Power	Power	Power	Power
Hydraulic clutch	Hydraulic clutch	Hydraulic clutch	Hydraulic clutch
54.5-in. (1384 mm)	54.5-in. (1384 mm)	54.5-in. (1384 mm)	54.5-in. (1384 mm)
75 in. (1905 mm)	75 in. (1905 mm)	75 in. (1905 mm)	75 in. (1905 mm)
57.5 in. (1461 mm) w/ 54-in. Mower	62 in. (1575 mm) w/ 60-in. Mower	57.5 in. (1461 mm) w/ 54-in. Mower	62 in. (1575 mm) w/ 60-in. Mower
55.7 in. (1415 mm)	54.5 in. (1384 mm)	54.5 in. (1384 mm)	55.7 in. (1415 mm)
1,255 lb (569 kg) w/ 54-in. Mower	1,163 lb (528 kg) w/ 54-in. Mower	1,218 lb (552 kg) w/ 54-in. Mower	1,253 lb (568 kg) w/ 54-in. Mower
Forged 48 in. Accel Deep™ Mower (1219 mm)	Forged 48 in. Accel Deep™ Mower (1219 mm)	Forged 48 in. Accel Deep™ Mower (1219 mm)	Forged 48 in. Accel Deep™ Mower (1219 mm)
54 in. High Capacity (1372 mm)	54 in. High Capacity (1372 mm)	54 in. High Capacity (1372 mm)	54 in. High Capacity (1372 mm)
60 in. High Capacity (1524 mm)	60 in. High Capacity (1524 mm)	60 in. High Capacity (1524 mm)	60 in. High Capacity (1524 mm)
4 year / 700 hours	4 year / 700 hours	4 year / 700 hours	4 year / 700 hours



Specifications

X570 / X580

X584 / X590

X330 / X350

X354 (4WS) / X370

ENGINE

Model Number	FR730V iTorque™ Power System	FR730V iTorque™ Power System / FR730V EFI iTorque™ Power System	44J6 Cyclonic / FR651V iTorque™ Power System	FR651V iTorque Power System
Engine Power	24 hp* (17.9 kW)	24 hp* (17.9 kW) / 25.5 hp* (19.0 kW)	22 hp* (16.4 kW) / 21.5 hp* (16.0 kW)	21.5 hp* (16.0 kW)
Displacement	44.3 cu in. (726 cc)	44.3 cu in. (726 cc)	44.2 cu in. (724 cc) / 44.3 cu in. (726 cc)	44.3 cu in. (726 cc)
Cooling	Air	Air	Air	Air
Governor	Mechanical	Mechanical / Electronic throttle control	Mechanical	Mechanical
Cylinder Configuration	V-twin	V-twin	V-twin	V-twin
Electrical System	12 volts, 12 amp regulated	12 volts, 12 amp regulated / 12 volts, 24 amp regulated	12 volts, 14 amp regulated / 12 volts, 12 amp regulated	12 volts, 12 amp regulated

SLOPE

Slope Operating Limit**	15 degrees	15 degrees	15 degrees	15 degrees
-------------------------	------------	------------	------------	------------

DASH DISPLAY

Fuel Gauge	Yes	Yes	Yes	Yes
------------	-----	-----	-----	-----

FUEL SYSTEM

Fuel Tank Capacity	4.4 U.S. gal. (16.7 L)	4.4 U.S. gal. (16.7 L)	3.3 U.S. gal. (12.5 L)	3.3 U.S. gal. (12.5 L)
--------------------	------------------------	------------------------	------------------------	------------------------

TRANSMISSION

Forward Speed	0-7.2 mph (0-11.6 km/h)	0-7.2 mph (0-11.6 km/h)	0-5.5 mph (0-8.9 km/h)	0-5.5 mph (0-8.9 km/h) / 0-5.8 mph (0-9.3 km/h)
Reverse Speed	0-5.2 mph (0-8.4 km/h)	0-5.2 mph (0-8.4 km/h)	0-4 mph (0-6.4 km/h)	0-4 mph (0-6.4 km/h) / 0-3.5 mph (0-5.6 km/h)

STEERING:

	Low effort, 2-wheel steer / Power, 2-wheel steer	Power, 4-wheel steer / Power, 2-wheel steer	Low effort, 2-wheel steer	Low effort, 4-wheel steer / Power, 2-wheel steer
Tilt Wheel	No	Yes, 5 position	No	No
Front Axle	Cast iron	Cast iron	Cast iron	Cast iron

TURNING RADIUS

	16 in. (40.6 cm) / 22 in. (55.9 cm)	19 in. (48.3 cm) / 22 in. (55.9 cm)	16 in. (40.6 cm)	15 in. (38.1 cm) / 22 in. (55.9 cm)
--	-------------------------------------	-------------------------------------	------------------	-------------------------------------

UNCUT CIRCLE RADIUS

	23 in. (58 cm) w/48A Mower or 20 in. (51 cm) w/54A Mower / 24 in. (61 cm) w/54A Mower	15 in. (38 cm) w/48A Mower or 12 in. (30 cm) w/54A Mower / 27 in. (69 cm) w/48A Mower or 24 in. (61 cm) w/54A Mower	26 in. (66 cm) w/42A Mower or 21 in. (53 cm) w/48A Mower	15 in. (38 cm) w/42A Mower a / 30 in. (76 cm) w/42A Mower
--	---------------------------------------------------------------------------------------	---------------------------------------------------------------------------------------------------------------------	----------------------------------------------------------	-----------------------------------------------------------

SEAT

Style	15 in. (38.1 cm) open back with grasp / 21 in. (53.3 cm) cut and sewn	21 in. (53.3 cm) cut and sewn	15 in. (38.1 cm) open back w/ grasp	18-inch (45.7 cm) cut-and-sewn
-------	-----------------------------------------------------------------------	-------------------------------	-------------------------------------	--------------------------------

LIFT SYSTEM

Type	Foot pedal with adjustable spring assist / Hydraulic	Hydraulic	Foot pedal (42A Mower) / Foot pedal with spring assist (48A Mower)	Foot pedal/ Hydraulic
------	------------------------------------------------------	-----------	--------------------------------------------------------------------	-----------------------

TIRES

Type	Turf (front and rear) / Turf (front), and Heavy-Duty All-Purpose (rear)	Turf (front and rear) / Turf (front), and Heavy-Duty All-Purpose (rear)	Turf	Turf
Front	15x6.5-8 / 16x6.5-8	16x6.5-8	15x6-6	15x6-6
Rear	24x12-12 / 24x12-12	24x9.5-12 / 24x12-12	20x10-8	20x10-10 / 20X10-8

DIMENSIONS

Height	45-in (114-3. cm)	52.25-in (132.7 cm)	46-in (117 cm)	49-in (124 cm)
Wheelbase	51.2 in. (130 cm)	51.2 in. (130 cm)	49.4 in. (125 cm)	49.4 in. (125 cm)
Overall Length	75 in. (191 cm) / 79 in. (201 cm)	79 in. (201 cm)	72 in. (183 cm)	72 in. (183 cm)
Min. Storage Width (Deflector Up)	53.6 in. (136 cm) w/48 in. Accel Deep or 59.4 in. (151 cm) w/54 in. Accel Deep	53.6 in. (136 cm) w/48 in. Accel Deep or 59.4 in. (151 cm) w/54 in. Accel Deep	50.5 in. (128 cm) w/42 in. Accel Deep or 53.6 in. (136 cm) w/48 in. Accel Deep	50.5 in. (128 cm) w/42 Accel Deep Mower
Weight, Tractor (no fuel) and Mower	748 lb (339 kg) w/48 in. Accel Deep, 756 lb (343 kg) w/54 in. Accel Deep / 787 lb (357 kg) w/54 in. Accel Deep	837 lb (380 kg) w/48 in. Accel Deep or 845 lb (383 kg) w/54 in. Accel Deep / 797 lb (362 kg) w/48 in. Accel Deep or 805 lb (365 kg) w/54 in. Accel Deep	542 lb (246 kg) w/42 in. Accel Deep or 606 lb (275 kg) w/48 in. Accel Deep / 543 lb (246 kg) w/42 in. Accel Deep or 607 lb (275 kg) w/48 in. Accel Deep	623 lb (283 kg) w/42 in. mower / 570 lb (259 kg) w/42 in. mower

MOWER DECK OPTIONS

	48 in. Accel Deep™ or 54 in. Accel Deep / 54 in. Accel Deep	48 in. Accel Deep or 54 in. Accel Deep	42 in. Accel Deep or 48 in. Accel Deep / 42 in. Accel Deep, 42 in. Edge Mulch, or 48 in. Accel Deep	42 in. Accel Deep
Cutting Width /Blades	48 in. (122 cm) 3 blades or 54 in. (137 cm) 3 blades / 54 in. (137 cm) 3 blades	48 in. (122 cm) 3 blades or 54 in. (137 cm) 3 blades	42 in. (107 cm) 2 blades or 48 in. (122 cm) 3 blades	42 in. (107 cm) 2 blades

BUMPER-TO-BUMPER WARRANTY**

	4 year/500 hours	4 year/500 hours	4 year/300 hours	4 year/300 hours
--	------------------	------------------	------------------	------------------

** Attachments may reduce Slope Operating Limit. See Operator's Manual.

X380**X384 (4WS) /
X390 / X394****X350R****S220****S240**

FR691V iTorque Power System	FR691V iTorque Power System	FR651V iTorque Power System	44J6 Cyclonic	FR651V
23 hp* (17.2 kW)	23 hp* (17.2 kW)	21.5 (16 kW)	22 hp* (16.4 kW)	21.5 hp* (16.0 kW)
44.3 cu in. (726 cc)	44.3 cu in. (726 cc)	44.3 cu in. (726 cc)	44.2 cu in. (724 cc)	44.3 cu in. (726 cc)
Air	Air	Air	Air	Air
Mechanical	Mechanical	Mechanical	Mechanical	Mechanical
V-twin	V-twin	V-twin	V-twin	V-twin
12 volts, 12 amp regulated	12 volts, 12 amp regulated	12 volts, 12 amp regulated	12 volts, 14 amp regulated	12 volts, 12 amp regulated
15 degrees	15 degrees	15 degrees	13 degrees	13 degrees
Yes	Yes	Low fuel indicator	Mechanical	Yes
3.3 U.S. gal. (12.5 L)	3.3 U.S. gal. (12.5 L)	2 U.S. gal. (7.6 L)	2.4 U.S. gal. (9.1 L)	2.4 U.S. gal. (9.1 L)
0-6.2 mph (0-10 km/h)	0-5.9 mph (0-9.5 km/h) / 0-6.2 mph (0-10.0 km/h) / 0-6.2 mph (0-10.0 km/h)	0-5.3 mph (0-8.5 km/h)	0-5.5 mph (0-8.9 km/h)	0-5.5 mph (0-8.9 km/h)
0-3.5 mph (0-5.6 km/h)	0-3.5 mph (0-5.6 km/h)	0-4 mph (0-6.4 km/h)	0-3.2 mph (0-5.2 km/h)	0-3.2 mph (0-5.2 km/h)
Low effort, 2-wheel steer	Low effort, 4-wheel steer / Power, 2 wheel steer / Power, 4-wheel steer	Low effort, 2-wheel steer	Low effort, 2-wheel steer	Low effort, 2-wheel steer
No	No/Yes/Yes	No	No	No
Cast iron	Cast iron	Cast iron	Cast iron	Cast iron
16 in. (40.6 cm)	15 in. (38.1 cm) / 22 in. (55.9 cm) / 19 in. (48.3 cm)	16.5 in. (42 cm)	18 in. (46 cm)	18 in. (46 cm)
21 in. (53 cm) w/48A Mower or 18 in. (46 cm) w/54A Mower	9 in. (23 cm) w/48A Mower / 24 in. (61 cm) w/48A Mower or 22 in. (56 cm) w/54A Mower / 15 in. (38 cm) w/48A Mower	Right 23 in. (58 cm), Left 28 in. (71 cm) with 42R Mower	24 in. (61 cm) w/42A Mower	24 in. (61 cm) w/42A Mower or 18.5 in. (47 cm) w/48A Mower
18-inch (45.7 cm) cut-and-sewn	18-inch (45.7 cm) cut-and-sewn	15-inch (38.1 cm) open back w/ grasp	15 in. (38.1 cm) open back	15 in. (38.1 cm) open back w/ grasp
Foot pedal with spring assist	Foot pedal with spring assist / Hydraulic / Hydraulic	Foot pedal with spring assist	Hand lever with spring assist	Hand lever with spring assist
Turf	Turf	Turf	Turf	Turf
15x6.5-8	15x6-6 / 15x6.5-8 / 15x6.5-8	15x6-6	15x6-6	15x6-6
22x11-10	20x10-10 / 22x11-10 / 22x9.5-12	20x10-8	20x10-8	20x10-8
49-in (124 cm)	49-in (124 cm)	46 in. (117 cm)	45-in (114 cm)	45-in (114 cm)
49.4 in. (125 cm)	49.4 in. (125 cm) / 49.4 in. (125 cm) / 51.2 in. (130 cm)	49.4 in. (125 cm)	48.9 in. (124.2 cm)	48.9 in. (124.2 cm)
72 in. (183 cm)	72 in. (183 cm) / 72 in. (183 cm) / 74 in. (188 cm)	99 in. (251.4 cm)	75 in. (191 cm)	75 in. (191 cm)
53.6 in. (136 cm) w/48 in. Accel Deep Mower or 59.4 in. (151 cm) w/54 in. Accel Deep Mower	53.6 in. (136 cm) w/48 in. Accel Deep Mower / 53.6 in. (136 cm) w/48 in. Accel Deep Mower or 59.4 in. (151 cm) w/54 in. Accel Deep Mower / 53.6 in. (136 cm) w/48 in. Accel Deep Mower	43.8 in. (111 cm) with 42 in. rear discharge, rear collect mower	49 in. (124 cm) w/42A Mower	49 in. (124 cm) w/42A Mower or 54 in. (137 cm) w/48A Mower
651 lb (295 kg) w/48 in. mower or 659 lb (299 kg) w/54 in. mower	700 lb (318 kg) w/48 in. mower / 678 lb (308 kg) w/48 in. mower or 686 lb (311 kg) w/54 in. mower / 755 lb (342 kg) w/48 in. mower	646 lb (293 kg) w/42 in. mower	481 lb (218 kg) w/42A 486 lb (220 kg) w/42A	486 lb (220 kg) w/42A or 522 lb (237 kg) w/48A
48 in. Accel Deep or 54 in. Accel Deep	48 in. Accel Deep / 48 in. Accel Deep or 54 in. Accel Deep / 48 in. Accel Deep	42 in. rear discharge and collect with standard mulch plug	42 in. Accel Deep	42 in. Accel Deep or 48 in. Accel Deep
48 in. (122 cm) 3 blades or 54 in. (137 cm) 3 blades	48 in. (122 cm) 3 blades / 48 in. (122 cm) 3 blades or 54 in. (137 cm) 3 blades / 48 in. (122 cm) 3 blades	42 in. (107 cm) 2 blades	42 in. (107 cm) 2 blades	42 in. (107 cm) 2 blades or 48 in. (122 cm) 3 blades
4 year/300 hours	4 year/300 hours	4 year/300 hours	3 year/200 hours	3 year/200 hours

Specifications **S100**

S110

S120 / S130

S140

S160

S170 / S180

ENGINE

Horsepower*	17.5 hp (13.0 kW)	19.0 hp (14.2 kW)	22 hp (16.4 kW)	22 hp (16.4 kW)	24 hp (17.9 kW)	24 hp (17.9 kW)
Cylinders	One	One	V-twin	V-twin	V-twin ELS	V-twin ELS
Displacement	30.5 cu in. (500 cc)	33 cu in. (540 cc)	44 cu in. (724 cc)	44 cu in. (724 cc)	44 cu in. (724 cc)	44 cu in. (724 cc)
Oil Filter	Traditional	Traditional	John Deere Easy Change™ 30-Second Oil Change System***	Traditional	John Deere Easy Change™ 30-Second Oil Change System***	John Deere Easy Change™ 30-Second Oil Change System***
Air Filter	Cartridge	Cartridge	Cartridge	Cartridge	Cartridge with prefilter	Cartridge with prefilter

SLOPE

Slope Operating Limit****	13 degrees	13 degrees	13 degrees	13 degrees	13 degrees	13 degrees
---------------------------	------------	------------	------------	------------	------------	------------

MOWER DECK

Cut Width	42 in. (107 cm)	42 in. (107 cm)	42 in. (107 cm)	48 in. (122 cm)	48 in. (122 cm)	48 in. (122 cm) / 54 in. (137 cm)
Cutting Blades	Two	Two	Two	Three	Three	Three
Cut Height	1 to 4 in. (25.4 to 102 mm)	1 to 4 in. (25.4 to 102 mm)	1 to 4 in. (25.4 to 102 mm)	1 to 4 in. (25.4 to 102 mm)	1 to 4 in. (25.4 to 102 mm)	1 to 4 in. (25.4 to 102 mm)
Mower Deck Material	Stamped steel	Stamped steel	Stamped steel	Stamped steel	Stamped steel	Stamped steel
Blade Engagement / PTO	Manual	Manual	Manual / Electric	Electric	Electric	Electric

TRANSMISSION

Type	Hydrostatic	Hydrostatic	Hydrostatic	Hydrostatic	Hydrostatic	Hydrostatic
------	-------------	-------------	-------------	-------------	-------------	-------------

TURNING RADIUS

Turning Radius	18 in. (46 cm)	18 in. (46 cm)	18 in. (46 cm)	18 in. (46 cm)	18 in. (46 cm)	18 in. (46 cm)
----------------	----------------	----------------	----------------	----------------	----------------	----------------

ELECTRICAL SYSTEM

Capacity	8 amp	8 amp	8 amp	8 amp	14 amp	14 amp
----------	-------	-------	-------	-------	--------	--------

FUEL SYSTEM

Fuel Gauge	Mechanical	Mechanical	Yes	Mechanical	Yes	Yes
Fuel Tank Capacity	2.4 gal. (9.08 L)	2.4 gal. (9.08 L)	2.4 gal. (9.08 L)	2.4 gal. (9.08 L)	2.4 gal. (9.08 L)	2.4 gal. (9.08 L)
Type of Fuel	Gasoline	Gasoline	Gasoline	Gasoline	Gasoline	Gasoline
Fuel Filter	Replaceable, in fuel line	Replaceable, in fuel line	Replaceable, in fuel line	Replaceable, in fuel line	Replaceable, in fuel line	Replaceable, in fuel line

TRAVEL SPEED

Forward	0-5.5 mph (8.9 km/h)	0-5.5 mph (8.9 km/h)	0-5.5 mph (8.9 km/h)	0-5.5 mph (8.9 km/h)	0-5.5 mph (8.9 km/h)	0-5.5 mph (8.9 km/h)
Reverse	0-3.2 mph (5.2 km/h)	0-3.2 mph (5.2 km/h)	0-3.2 mph (5.2 km/h)	0-3.2 mph (5.2 km/h)	0-3.2 mph (5.2 km/h)	0-3.2 mph (5.2 km/h)

SEAT

Height	11 in. (27.9 cm)	15 in. (38.1 cm) open back	15 in. (38.1 cm) open back	15 in. (38.1 cm) open back	15 in. (38.1 cm) w/lumbar adjustment	15 in. (38.1 cm) w/lumbar adjustment
--------	------------------	-------------------------------	-------------------------------	-------------------------------	-----------------------------------------	-----------------------------------------

TIRES

Front	15x6-6	15x6-6	15x6-6	15x6-6	15x6-6	16x6.5-8
Rear	20x8-8	20x8-8	20x8-8 / 20x10-8	20x8-8	20x10-8	22x9.5-12

DIMENSIONS

Overall Length	69.7 in. (177 cm)	69.7 in. (177 cm)	69.7 in. (177 cm) / 74.2 in. (188 cm)	69.7 in. (177 cm)	74.9 in. (190 cm)	75.3 in. (191 cm)
Overall Width (deflector down)	55.2 in. (140 cm)	55.2 in. (140 cm)	55.2 in. (140 cm)	60.8 in. (154 cm)	60.8 in. (154 cm)	60.8 in. (154 cm) / 67.0 in. (170 cm)
Height	40.2 in. (102 cm)	44.5 in. (113 cm)	44.5 in. (113 cm) / 45 in. (114 cm)	44.5 in. (113 cm)	45.3 in. (115 cm)	45.7 in. (116 cm)

NET WEIGHT (NO FUEL)

Net Weight (No Fuel)	414 lb (188 kg)	414 lb (188 kg)	444 lb (201 kg) / 462 lb (210 kg)	468 lb (212 kg)	481 lb (218 kg)	503 lb (239 kg) / 526 lb (239 kg)
----------------------	-----------------	-----------------	--------------------------------------	-----------------	-----------------	--------------------------------------

MISCELLANEOUS

Cruise Control	No	No	Yes	No	Yes	Yes
Front Bumper	Optional	Optional	Optional / Standard	Standard	Standard	Standard
Steering Wheel	Standard, 12 in.	Standard, 12 in.	Standard, 12 in.	Standard, 12 in.	Deluxe, 14 in.	Deluxe, 14 in.
Storage Compartment	Storage, no cover	Storage, no cover	Storage w/cover	Storage, no cover	Storage w/cover	Storage w/cover

BUMPER-TO-BUMPER WARRANTY**

Bumper-to-Bumper Warranty**	2 year / 120 hours	2 year / 120 hours	2 year / 120 hours	2 year / 120 hours	2 year / 120 hours	2 year / 120 hours
-----------------------------	--------------------	--------------------	--------------------	--------------------	--------------------	--------------------

* The engine horsepower and torque information are provided by the engine manufacturer to be used for comparison purposes only. Actual operating horsepower and torque will be less. Refer to the engine manufacturer's web site for additional information.

** Term limited to years or hours used, whichever comes first, and varies by model. See the LIMITED WARRANTY FOR NEW JOHN DEERE TURF AND UTILITY EQUIPMENT at JohnDeere.com or www.JohnDeere.ca/TUWarranty for details.

*** Changing the filter removes the captured contaminants and replaces about 0.8 qt (0.76 L) of engine oil.

**** Attachments may reduce Slope Operating Limit. See Operator's Manual.

Attachments

X700 SERIES X500 SERIES X300 SERIES 200 SERIES 100 SERIES

SNOW EQUIPMENT

52-in. Quick-Hitch Rotary Broom	X				
60-in. Heavy-Duty Rotary Broom	X				
44-in. Snow Blower		X	X	X	X
47-in. Snow Blower		X			
47-in. Quick-Hitch Snow Blower	X				
54-in. Quick-Hitch Snow Blower	X				

FRONT BLADES

44-in. Front Blade			X		
46-in. Front Blade				X	X
48-in. Front Blade		X	X ^Δ		
54-in. Quick-Hitch Front Blade	X				
60-in. Quick-Hitch Front Blade	X				

MATERIAL COLLECTION SYSTEMS

2-bag (6.5-bu) Rear Bagger				X	X
2-bag (7-bu) Rear Bagger			X ^Δ		
3-bag (14-bu) Rear Bagger	X	X			
MC519 (19-bu) Power Flow Cart	X	X	X ^Δ		
Front Thatcher	X	X	X		

WEATHER ENCLOSURES AND CANOPY

Weather Enclosure	X	X	X ^Δ	X	X
Sun Canopy		X	X ^Δ	X	X
ROPS Hard-Side Cab	X				

REAR MOUNTED ATTACHMENTS

Bucket Holder	X	X	X ^Δ	X	X
Spreader (Mounted)	X	X	X ^Δ		
Frontier BB2048L Box Blade	X				
Frontier RB2060L 5 Ft. Rear Blade	X				
Frontier LR2060L 5 Ft. Landscape Rake	X				
647 540 PTO 3-pt. Tiller	X				

SPRAYERS

15 U.S. Gallon Tow-Behind	X	X	X	X	X
25 U.S. Gallon Tow-Behind	X	X	X	X	X
45 U.S. Gallon Tow-Behind	X	X			
60 U.S. Gallon Tow-Behind	X	X			
15 U.S. Gallon Mounted				X	X
25 U.S. Gallon Mounted	X	X	X ^Δ		
45 gallon 3-point	X				

TOW-BEHIND EQUIPMENT

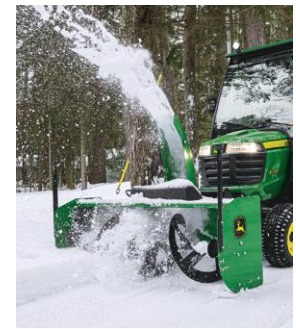
40-in. Thatcherator	X	X	X	X	X
36-in. Lawn Roller	X	X	X	X	X
48-in. Wide Steel Roller	X	X			
40-in. Plug Aerator/Thatcher Multi-Tool	X	X	X	X	X
40-in. Spiker Aerator	X	X	X	X	X
40-in. Aerator/Spreader	X	X	X	X	X
42-in. Lawn Sweeper	X	X	X	X	X
44-in. Lawn Sweeper	X	X	X	X	X
40-in. Plug Aerator	X	X	X	X	X
48-in. Plug Aerator	X	X			
Broadcast Spreaders	X	X	X	X	X

UTILITY CARTS**

7P Utility Cart	X	X	X	X	X
8Y Utility Cart	X	X	X	X	X
10P Utility Cart	X	X	X	X	X
10PX Utility Cart	X	X	X	X	X
13 Steel Utility Cart	X	X	X	X	X
16YS Swivel Poly Utility Cart	X	X	X	X	X
17P Utility Cart	X	X	X	X	X
18 Steel Utility Cart	X	X	X		
21 Steel Utility Cart	X	X	X		
Tractor Shovel 40-in.		X	X		
54-inch Tractor Shovel	X				

^Δ Not all attachments fit on all models within Series.

**The loaded weight of the utility cart not to exceed the weight of the tractor and operator.



Snow Blower



2-bag Power Flow Bagger



Lawn Sweeper



MulchControl™ System



Utility Cart



Committed turf experts dig into what you need. Factory-trained service and parts professionals ensure that your equipment keeps working as hard as you do. So, let's get to work, together.

†The engine horsepower and torque information are provided by the engine manufacturer to be used for comparison purposes only. Actual operating horsepower and torque will be less. Refer to the manufacturer's web site for additional information.

This literature has been compiled for worldwide circulation. Features, specifications and attachments subject to change without notice. While general information, pictures, and descriptions are provided, some illustrations and text may include finance, credit, insurance, product options, and accessories NOT AVAILABLE in all regions. PLEASE CONTACT YOUR LOCAL DEALER FOR DETAILS. John Deere reserves the right to change specifications, design, and price of the products described in this literature without notice. John Deere, the leaping deer symbol, and green and yellow trade dress are trademarks of Deere & Company.



4197281 (23-08)

www.JohnDeere.com
www.JohnDeere.ca

